
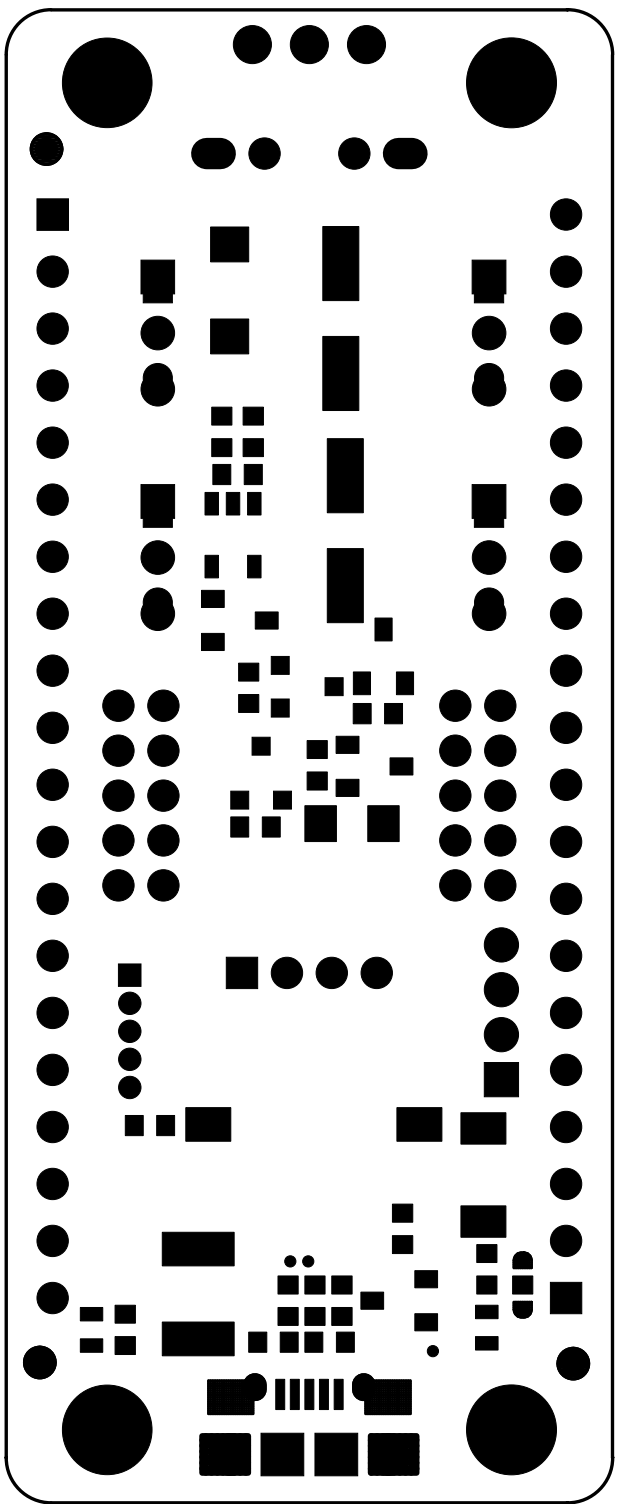



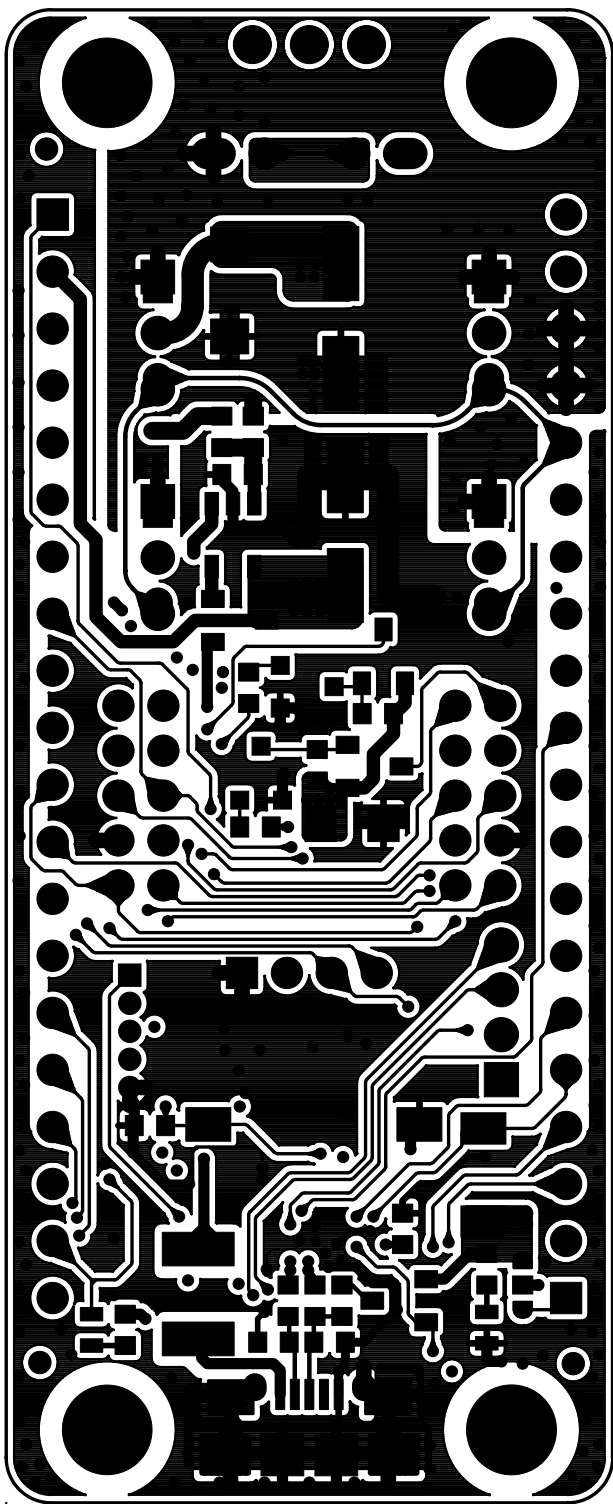
MODEL	OpenCM9.04_REV_1.0 (4 Layer)			 <a href="http://www.robotis.com">www.robotis.com</a> Tel.070-8671-2629
LAYER	Top Silk	STAGE	REV 1.0	
COMPANY	Robotis	THICKNESS	t	
DATE	2013.10.09	DESIGNER	C.S.M	


L1-TOP  
 L2-INT1 (GND)  
 L3-INT2 (POWER+GND)  
 L4-Bottom



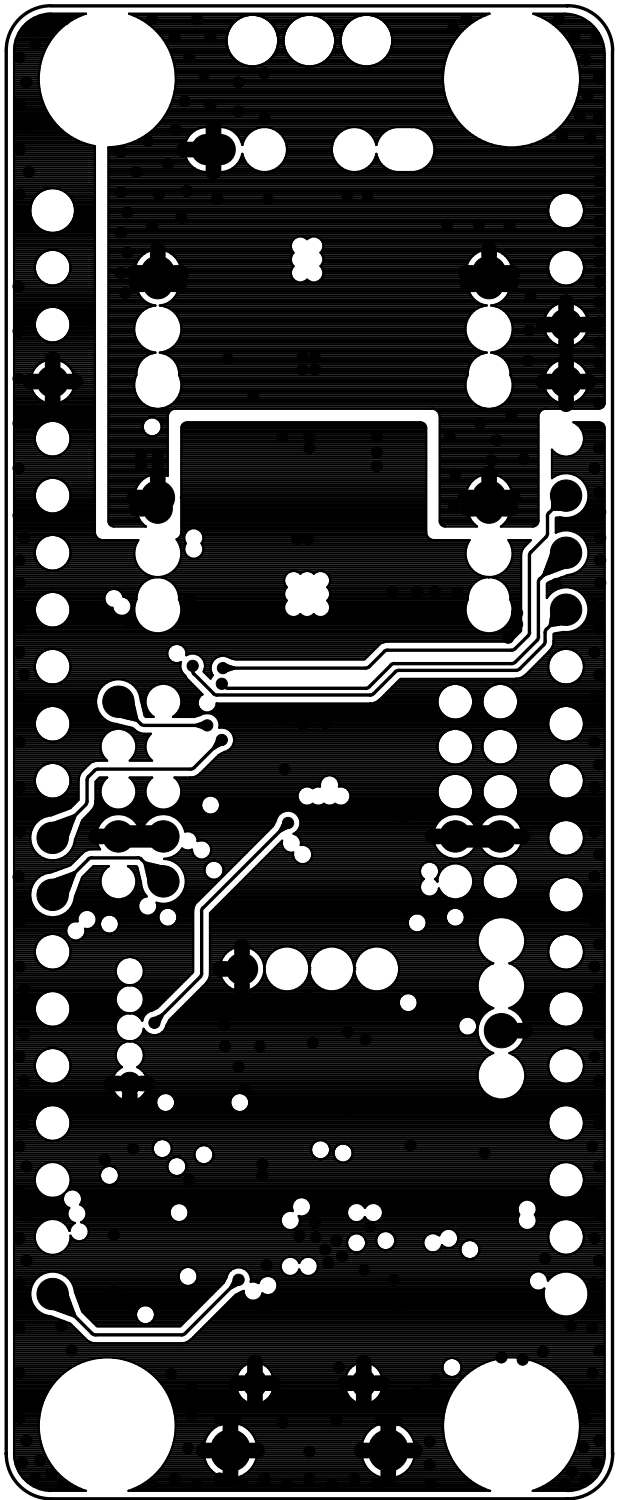
MODEL	OpenCM9.04_REV_1.0 (4 Layer)			 <a href="http://www.robotis.com">www.robotis.com</a> Tel.070-8671-2629
LAYER	SolderMask-TOP	STAGE	REV 1.0	
COMPANY	Robotis	THICKNESS	t	
DATE	2013.10.09	DESIGNER	C.S.M	


L1-TOP  
 L2-INT1 (GND)  
 L3-INT2 (POWER+GND)  
 L4-Bottom



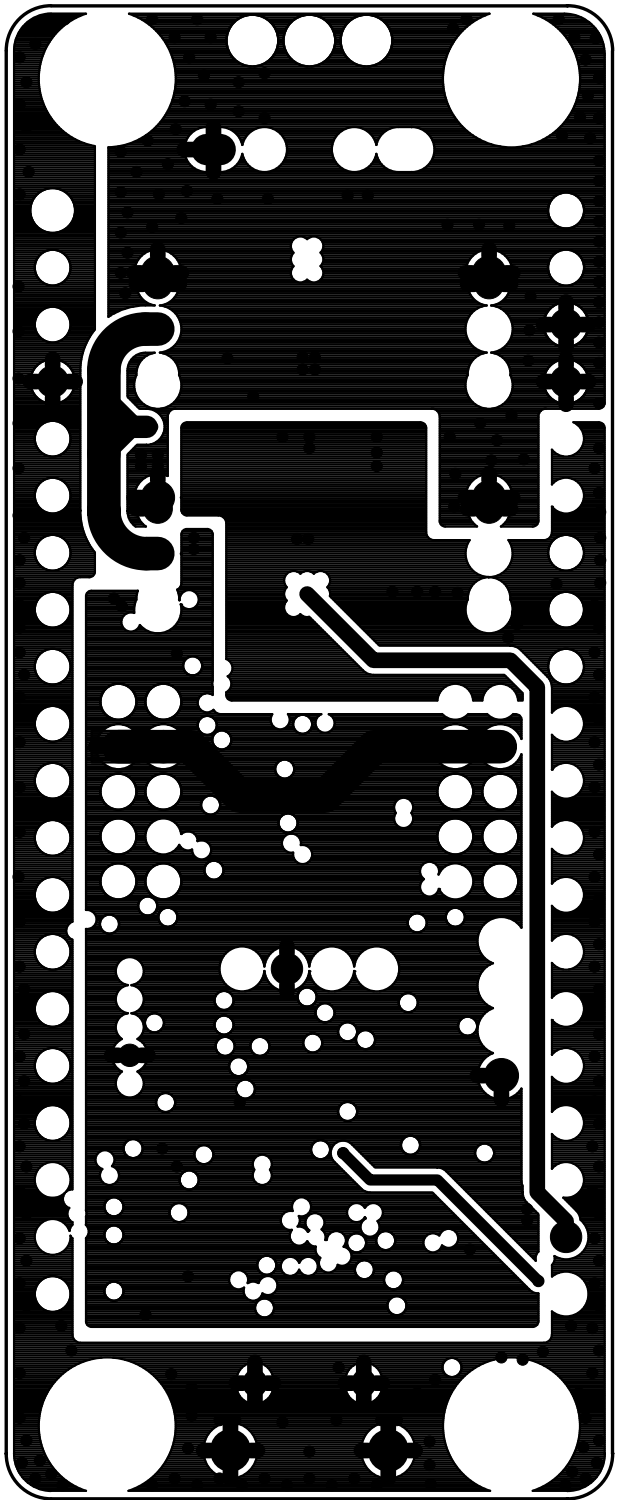
MODEL	OpenCM9.04_REV_1.0 (4 Layer)			 <a href="http://www.robotis.com">www.robotis.com</a> Tel.070-8671-2629
LAYER	L1-TOP	STAGE	REV 1.0	
COMPANY	Robotis	THICKNESS	t	
DATE	2013.10.09	DESIGNER	C.S.M	


L1-TOP  
 L2-INT1 (GND)  
 L3-INT2 (POWER+GND)  
 L4-Bottom



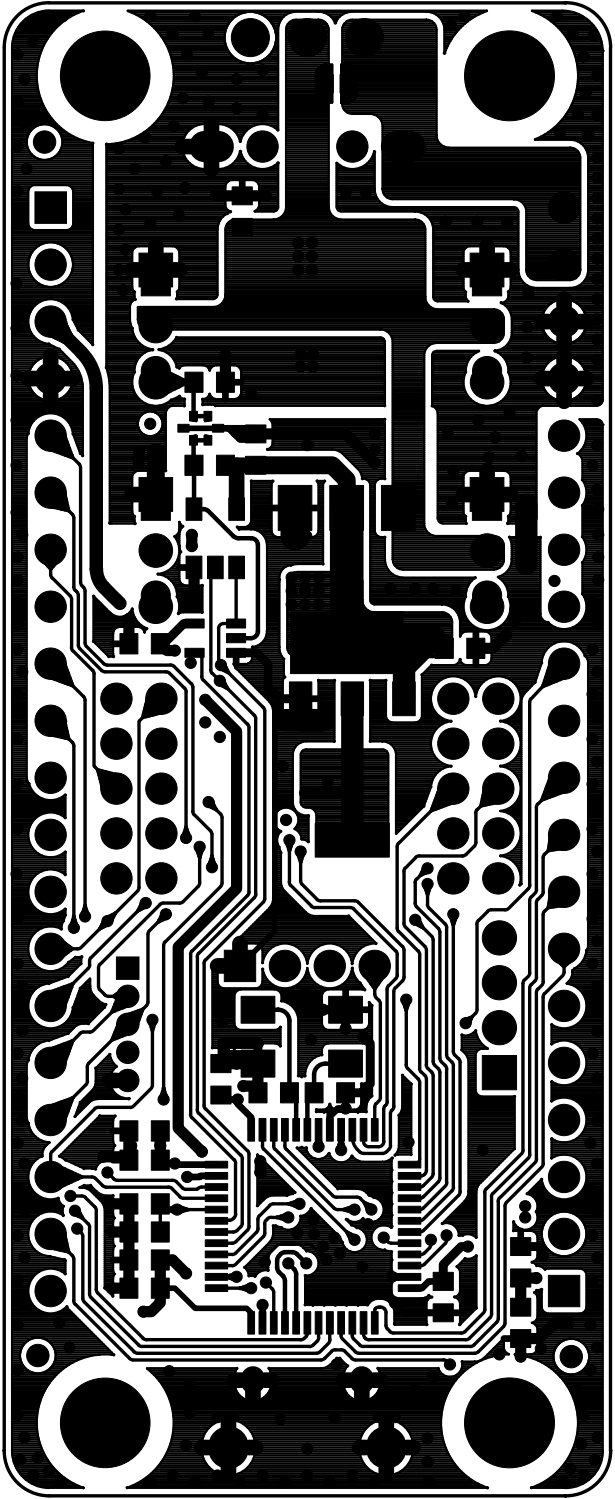
MODEL	OpenCM9.04_REV_1.0 (4 Layer)			 <a href="http://www.robotis.com">www.robotis.com</a> Tel.070-8671-2629
LAYER	L2-INT1	STAGE	REV 1.0	
COMPANY	Robotis	THICKNESS	t	
DATE	2013.10.09	DESIGNER	C.S.M	


L1-TOP  
 L2-INT1 (GND)  
 L3-INT2 (POWER+GND)  
 L4-Bottom



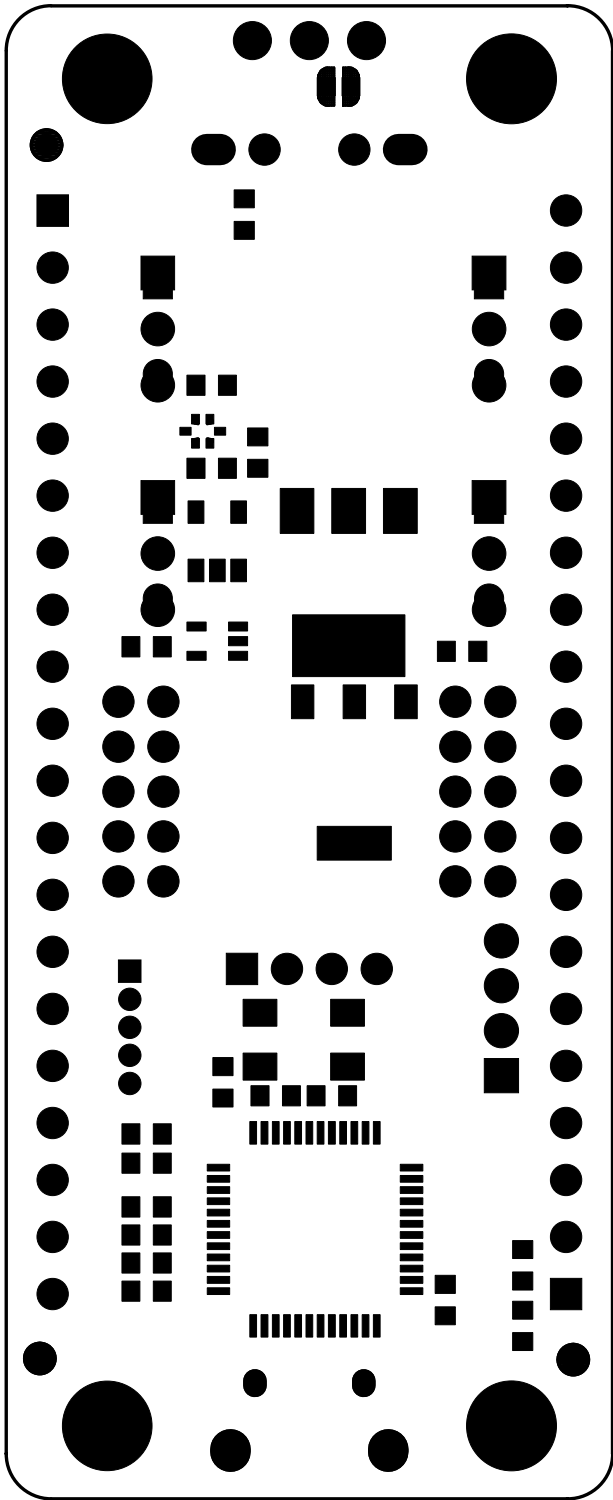
MODEL	OpenCM9.04_REV_1.0 (4 Layer)			 <a href="http://www.robotis.com">www.robotis.com</a> Tel.070-8671-2629
LAYER	L3-INT2	STAGE	REV 1.0	
COMPANY	Robotis	THICKNESS	t	
DATE	2013.10.09	DESIGNER	C.S.M	


L1-TOP  
 L2-INT1 (GND)  
 L3-INT2 (POWER+GND)  
 L4-Bottom



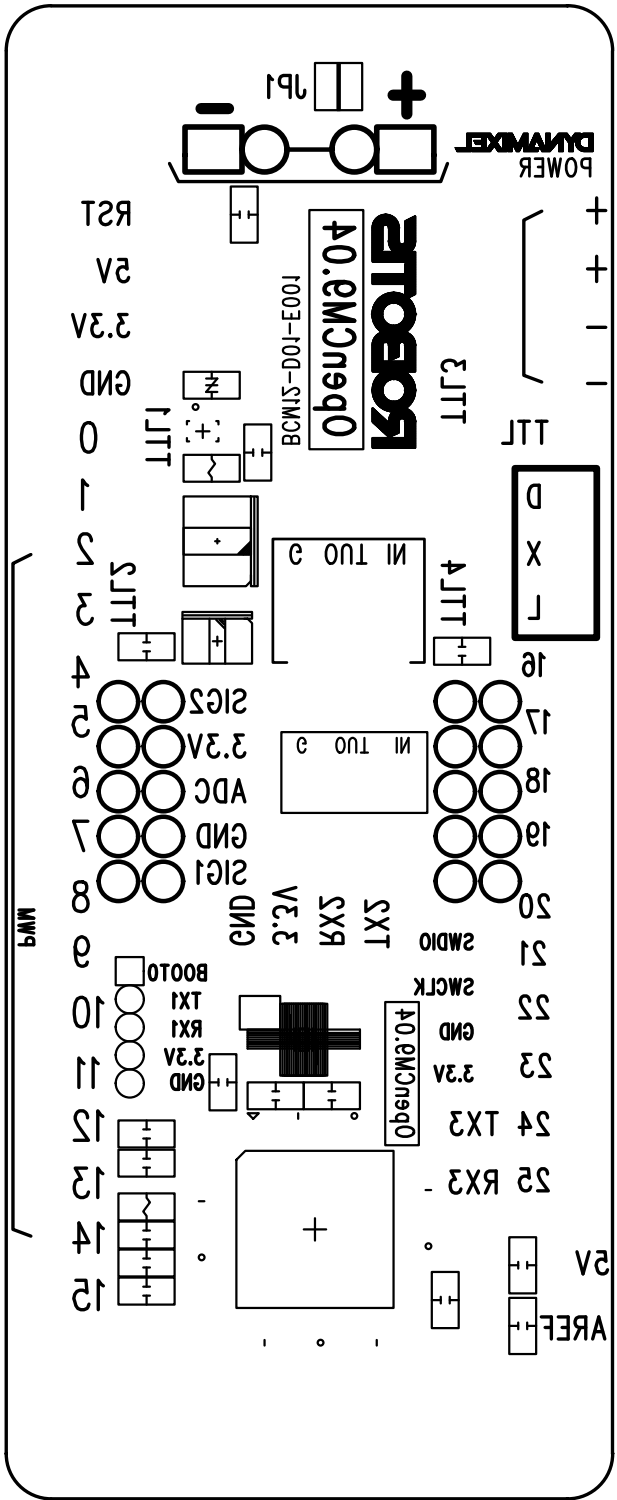
MODEL	OpenCM9.04_REV_1.0 (4 Layer)			 <a href="http://www.robotis.com">www.robotis.com</a> Tel.070-8671-2629
LAYER	L4-Bottom	STAGE	REV 1.0	
COMPANY	Robotis	THICKNESS	t	
DATE	2013.10.09	DESIGNER	C.S.M	

L1-TOP  
 L2-INT1 (GND)  
 L3-INT2 (POWER+GND)  
 L4-Bottom



MODEL	OpenCM9.04_REV_1.0 (4 Layer)			 www.robotis.com Tel.070-8671-2629
LAYER	SolderMask-BOTTOM	STAGE	REV 1.0	
COMPANY	Robotis	THICKNESS	t	
DATE	2013.10.09	DESIGNER	C.S.M	

L1-TOP  
 L2-INT1 (GND)  
 L3-INT2 (POWER+GND)  
 L4-Bottom

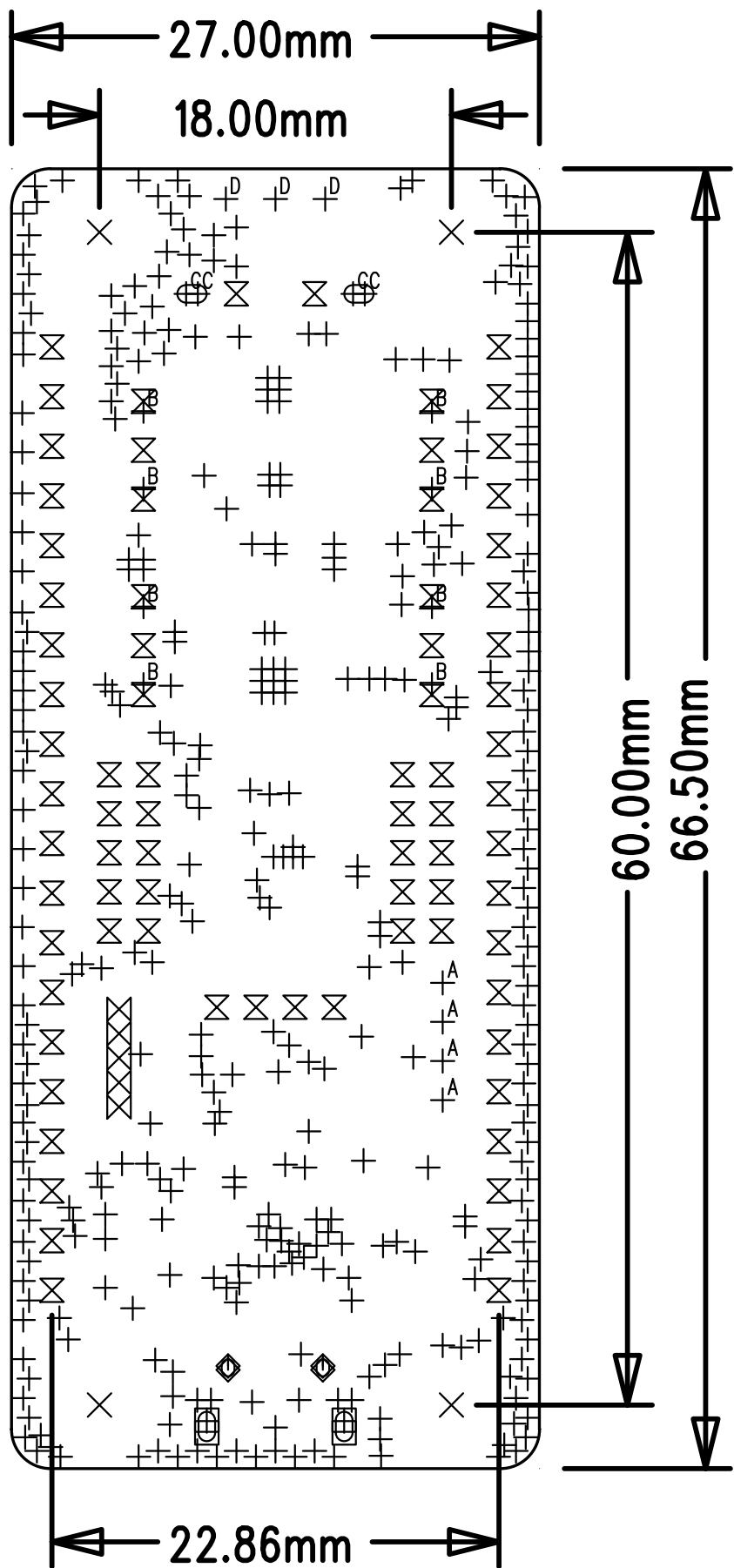


MODEL	OpenCM9.04_REV_1.0 (4 Layer)		
LAYER	Bottom Silk	STAGE	REV 1.0
COMPANY	Robotis	THICKNESS	t
DATE	2013.10.09	DESIGNER	C.S.M

**ROBOTIS**  
www.robotis.com  
Tel.070-8671-2629

- L1-TOP
- L2-INT1 (GND)
- L3-INT2 (POWER+GND)
- L4-Bottom





SIZE	QTY	SYM	PLATED	TOL
0.25	363	+	YES	+/-0.0
4	4	×	NO	+/-0.0
0.85 x 1.5	2	□	YES	+/-0.0
0.65 x 0.85	2	◇	YES	+/-0.0
0.9	78	⊗	YES	+/-0.0
0.65	5	⊗	YES	+/-0.0
0.889	4	+ <sup>A</sup>	YES	+/-0.0
0.8	8	+ <sup>B</sup>	YES	+/-0.0
0.9 x 1.5	2	+ <sup>C</sup>	YES	+/-0.0
1	3	+ <sup>D</sup>	YES	+/-0.0

MODEL	OpenCM9.04_REV_1.0 (4 Layer)			 www.robotis.com Tel.070-8671-2629
LAYER	Drill Drawing	STAGE	REV 1.0	
COMPANY	Robotis	THICKNESS	t	
DATE	2013.10.09	DESIGNER	C.S.M	

L1-TOP  
L2-INT1 (GND)  
L3-INT2 (POWER+GND)  
L4-Bottom